



Our Mission Statement – the reason our College exists

“Learning & Growing in the Light of the Gospel”

With Christ at the centre of our learning, we:

- *Help young people to achieve their greatest potential*
- *Guide their intellectual growth, nurture their God-given talents, and inspire them to live in service to others*
- *Aim to develop honest, confident, responsible and compassionate members of society, based on the educational values of Blessed Antonio Rosmini*

Our Vision Statement – the long-term change resulting from our work

‘Encouraging Big Ideas’

Ratcliffe’s unique educational offering based on our College motto, “Legis Plenitudo Charitas”, Love is the fulfilment of the Law, provides a perfect context within which young people may acquire the emotional knowledge and interpersonal skills necessary to live happy and purposeful lives. The College’s inclusive Catholic ethos is complemented by the outstanding quality of our College community through which our Mission, “Learning and Growing in the Light of the Gospel”, serves to nurture resilience and develop maturity. Young people leave Ratcliffe with a strong sense of who they are and their purpose in the world, equipped socially, emotionally, morally and spiritually to go forth and make a difference to the communities in which they live and work.

Author: R Ravat	Receiver: Teaching staff
Review Date: August 2023	Next Review: September 2024

EYFS Behaviour, Rewards and Sanctions Policy

Behaviour

Introduction

Ratcliffe College Nursery aims to foster a supportive and caring Christian community, where all pupils, visitors and staff feel welcomed, valued and safe. This is achieved through all members of the community working together to uphold our rules. The Ratcliffe College ethos has been created through a consistent and dedicated approach, combining assertive discipline with encouragement, praise and motivation. We work together promoting Gospel values to foster this joyful and positive environment for teaching and learning.

In the Nursery, we have clear rules and expectations for all the children to follow. These rules safeguard the safety and well-being of all children in our care.

The Nursery rules are:

- We live, love and learn like Jesus.
- We walk in and around the Nursery.
- We keep our feet and hands and unkind words to ourselves.
- We look after and care for all living things.
- We share, it's fair.
- We always try our best.

We work on a policy of assertive discipline and always look for positive behaviour. A number of rewards are used to build the children's self-esteem and reward good behaviour. Where poor behaviour is shown, sanctions are given.

Rewards

Rewarding Behaviour

We strongly promote the rewarding of positive behaviour and encourage this by providing good role models and clear boundaries. Children can be rewarded in the following ways:

- Individual or collective praise throughout lessons or as a special mention in Assemblies.
- Individual children may receive stickers, for example for good behaviour, helping others, excellent work during activities, independent skills or for eating well at lunchtime.
- Within a class, each Lead Practitioner or Class Teacher has their own reward system in place, and these are awarded at the teacher's professional judgement.
- Pupil of the Week – Each week a pupil is nominated from each class to be 'Pupil of the Week'. This could be given for good work all week, an individual achievement in an aspect of School life or making a good improvement in a certain area. It could also be given for playing co-operatively all week in the playground or excellent behaviour.
- House points – The children in Reception are allocated to a house and will receive house points for any positive behaviour either personally or academically. They can be awarded by any adult at school.
- The School also acknowledges all the efforts and achievements of pupils out of School and due praise is given accordingly when the School is notified.

Sanctions

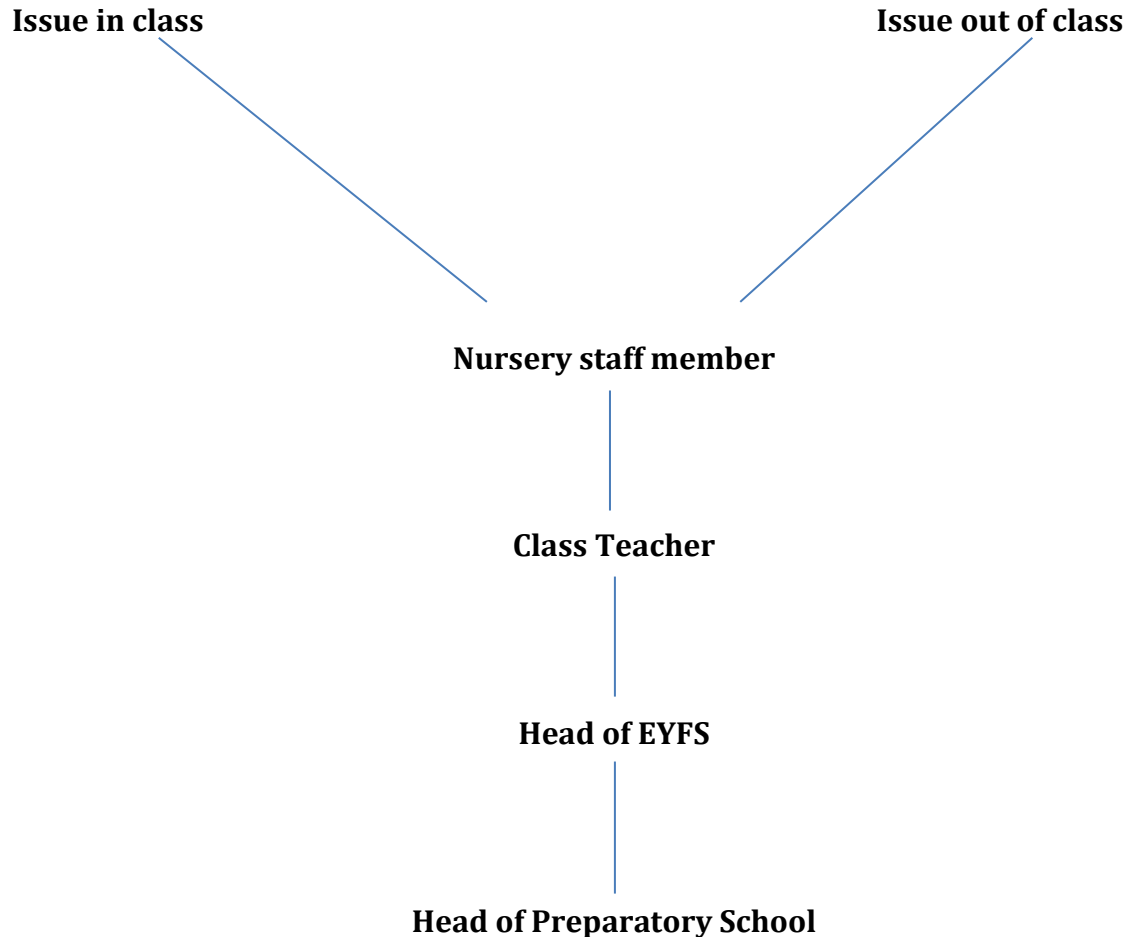
In the Nursery, we emphasise positive behaviour. Where we need to sanction a child, we are careful to criticise the behaviour and not the child. Sanctions will include:

- Verbal warnings i.e. "I don't like your behaviour, you are hurting your friend – please stop!"
- Redirection to another activity
- Time out for 3 minutes (Cygnets and Swans)
- Time out for 5 minutes (Reception)
- Writing a sorry card if they have upset or hurt another child.

Where poor behaviour continues over an extended period of time, a Behavioural Action Plan will be drawn up, with consultation with parents. This would be individualised and reviewed every term.

Nursery School Referral Procedure

Undesirable behaviour



It must be emphasised that each member of staff is responsible for the management and discipline of his/her own class. It is expected that all staff ensure good positive discipline, in accordance with Nursery School aims and policies.

Parents will be informed of undesirable behaviours so that we can work together to help support the child.

Link to other policies

Behaviour, Rewards and Sanction Policy

Review

This policy is reviewed annually by the Head of EYFS.